

## How to Use Puppet Warp in Photoshop

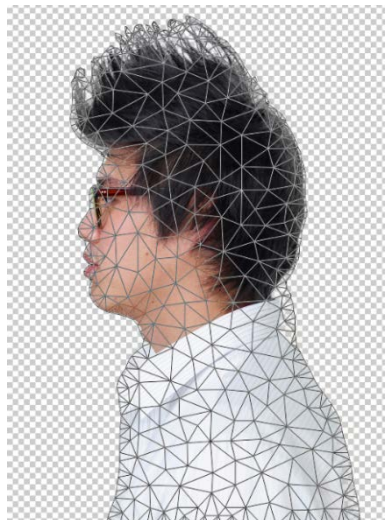
---

The 'puppet warp' feature in Photoshop allows you to reposition part of a subject without damaging the quality of the photo.

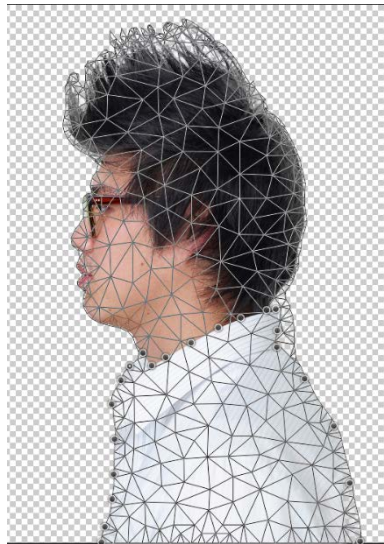
- 1.) You'll need to select a picture before you can begin. Whatever picture you choose, it'll need to have a transparent background or a mask. To start, I've used the following picture:



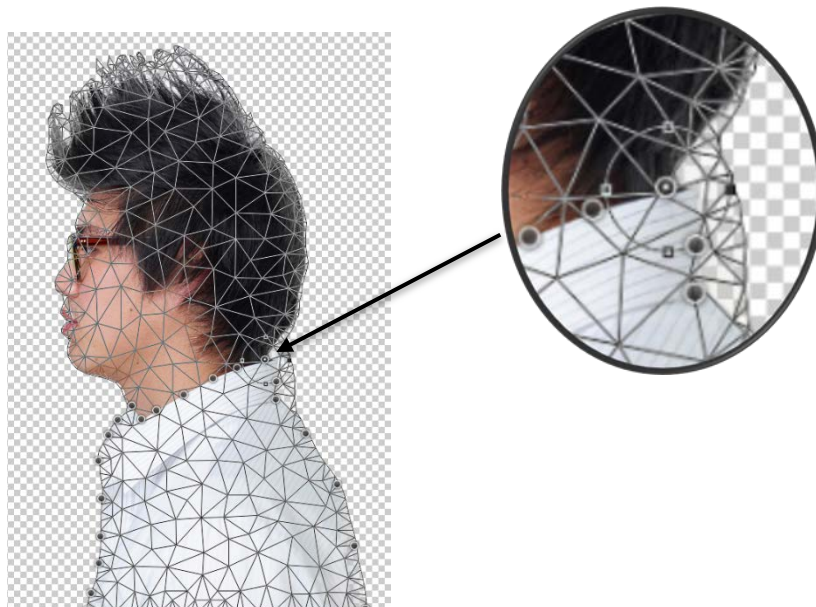
- 2.) Select the Edit tab, then Puppet Warp in the list. It should be in the fifth group. Your picture should be covered with a mesh like this:



- 3.) Click areas where you want to control movement or where you don't want it to move at all to place pins.



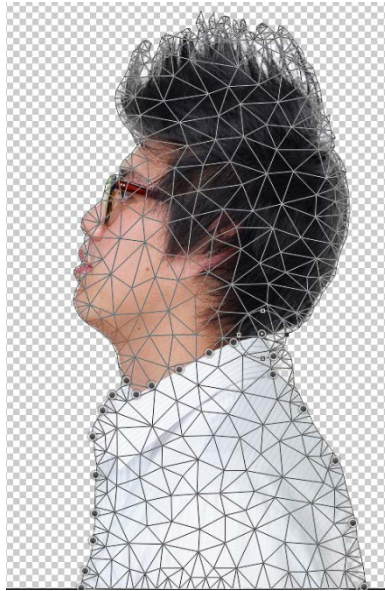
- 4.) Select a pin to control movement at by clicking on it. A white dot will appear in the center of the pin when it's selected. Press the alt button to make a circle



appear around it.

Your cursor should change to a curved double pointed arrow.

- 5.) While still pressing the alt button, click and move the cursor to change the way the picture is positioned.



- 6.) Select the check button when you're satisfied with it to commit the puppet warp.

